

Engineered for performance.

Oticon | Intiga



As the world leader in hearing instruments for over 100 years, **Oticon** is recognized for its ongoing innovation in design and engineering, introducing many of the most pioneering advances in science. This heritage takes a giant leap forward with **Intiga**. We invite you to try **Intiga** FREE today... and bring yourself back to where you belong: *The world of better hearing.*

Our experienced staff of Hearing Care Professionals is here for you.

At Northeast ENT, we believe that our job isn't finished until our patients' lives are improved. Northeast ENT's staff of professionals has a combined 19 years of experience in bringing the best possible hearing care to Columbia County and the surrounding area. We will work with you to find the hearing solution that best fits your individual needs and budget. Call us today and you will see that visiting Northeast ENT is the best way to take the first step toward improved hearing.



Sandra McGinley
M.S., CCC-A



Dr. Lucy Corbin
AuD, FAAA

Let Intiga transform your life.

3-DAY SPECIAL EVENT

Tuesday, November 8th - Thursday, November 10th

Call today to reserve an appointment for your:

- FREE hearing screening
- FREE consultation
- FREE demonstration of **Intiga**
- FREE 2-Week RISK FREE Trial

Experience **Intiga** FREE for two weeks at no obligation and see how it improves your hearing and understanding of what others are saying.

Please Call (570) 387-4368 Today!

Northeast
EAR, NOSE & THROAT
Advanced, Compassionate care *Associates, Inc.*
for better health

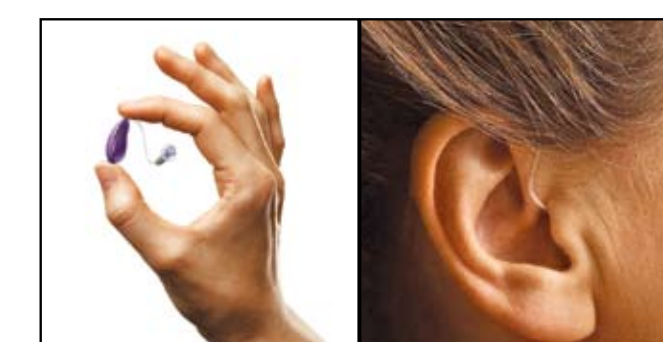
6850 Lows Road
Bloomsburg, PA

Open up a new world.



Free yourself from hearing loss.

Hearing loss can make you feel trapped by loneliness and confusion. But you can break away. Try Intiga risk free. Intiga is the super tiny, ultra sleek, high-performance hearing device that's new from Oticon. Intiga's high-speed sound processing chip allows you to differentiate sounds better, so you'll be able to understand and participate more, even in difficult listening situations. There's a world of new possibilities waiting for you. Set yourself free... with Intiga. **Live in the now.**



3-DAY SPECIAL EVENT

Tuesday, November 8th - Thursday, November 10th

©2011 Oticon, Inc. All Rights Reserved.

Proof Approval
please initial appropriate box



Approved



Approved
with changes noted



Make changes noted
send new proof

Introducing Intiga

Intiga brings your world closer so you can enjoy life again.



Intiga is the super tiny, ultra sleek, high-performance hearing device that's new from Oticon. Its high-speed sound processing chip allows you to differentiate sounds better, so you strain less to understand, even in difficult hearing situations. Don't let hearing loss wall you in. Break through to a new you with Intiga by Oticon.

- Works in harmony with your brain to let you hear voices and sounds more clearly.
- Lets you follow conversation by protecting speech information and reducing distortion.
- Enjoy music more when you stream audio wirelessly with any compatible Bluetooth™ device.
- Stylish and comfortable – so small, people will barely notice you're wearing a hearing device.

Expand your listening possibilities with ConnectLine.™

Intiga is fully compatible with ConnectLine – a range of plug-and-play Bluetooth™ accessories that can turn your Intiga hearing device into the world's smallest wireless headset. With ConnectLine, your Intiga can wirelessly connect to your cell phone, landline phone, television or just about any device with an audio output to boost your enjoyment of hearing and listening.

For one-on-one conversations in crowded or noisy places, the ConnectLine Microphone is an excellent solution. Just give your companion this tiny, discreet clip-on microphone, and his or her voice is streamed wirelessly to your hearing instruments. So you'll be able to participate and interact more effectively in some of life's most difficult communication situations.



Hear better, understand more...
converse with others properly

Check your hearing.

Take this quick test and check your ability to hear properly.

- | | Yes | No |
|--|--------------------------|--------------------------|
| 1. Do people seem to mumble or speak in a softer voice than they used to? | <input type="checkbox"/> | <input type="checkbox"/> |
| 2. Do you feel tired or irritable after a long conversation? | <input type="checkbox"/> | <input type="checkbox"/> |
| 3. Do you sometimes miss key words in a sentence, or frequently need to ask people to repeat themselves? | <input type="checkbox"/> | <input type="checkbox"/> |
| 4. When you are in a group or in a crowded restaurant, is it difficult for you to follow the conversation? | <input type="checkbox"/> | <input type="checkbox"/> |
| 5. When you are together with other people, does background noise bother you? | <input type="checkbox"/> | <input type="checkbox"/> |
| 6. Do you often need to turn up the volume on your TV or radio? | <input type="checkbox"/> | <input type="checkbox"/> |
| 7. Do you find it difficult to hear the doorbell or the telephone ring? | <input type="checkbox"/> | <input type="checkbox"/> |
| 8. Is carrying on a telephone conversation difficult? | <input type="checkbox"/> | <input type="checkbox"/> |
| 9. Do you find it difficult to pinpoint where an object is (e.g. an alarm clock or a telephone) from the noise it makes? | <input type="checkbox"/> | <input type="checkbox"/> |
| 10. Has someone close to you mentioned that you might have a problem with your hearing? | <input type="checkbox"/> | <input type="checkbox"/> |



HOW DID YOU DO?

If you answered "yes" to any of these questions, we urge you to attend our Special Event and ask for a complimentary hearing evaluation.

3-DAY SPECIAL EVENT

Tuesday, November 8th - Thursday, November 10th

Schedule Your FREE 2 Week Trial
of Intiga - Try It at Home and At Work!
Call (570) 387-4368 Today!

Northeast
EAR, NOSE & THROAT
Advanced, Compassionate care for better health **Associates, Inc.**

6850 Lows Road
Bloomsburg, PA